



2
0
2
0

COMPANY PROFILE

DREAM ENGINEERING
Excellence Delivered

Directors:

Camillo Shiweda *B(Eng) BSc(Eng) MSc(Eng)*

Valentino James *BSc(Eng) PrEng, MSc (Structural)*

Lwazi Mlomo *N.Dip(Eng)*

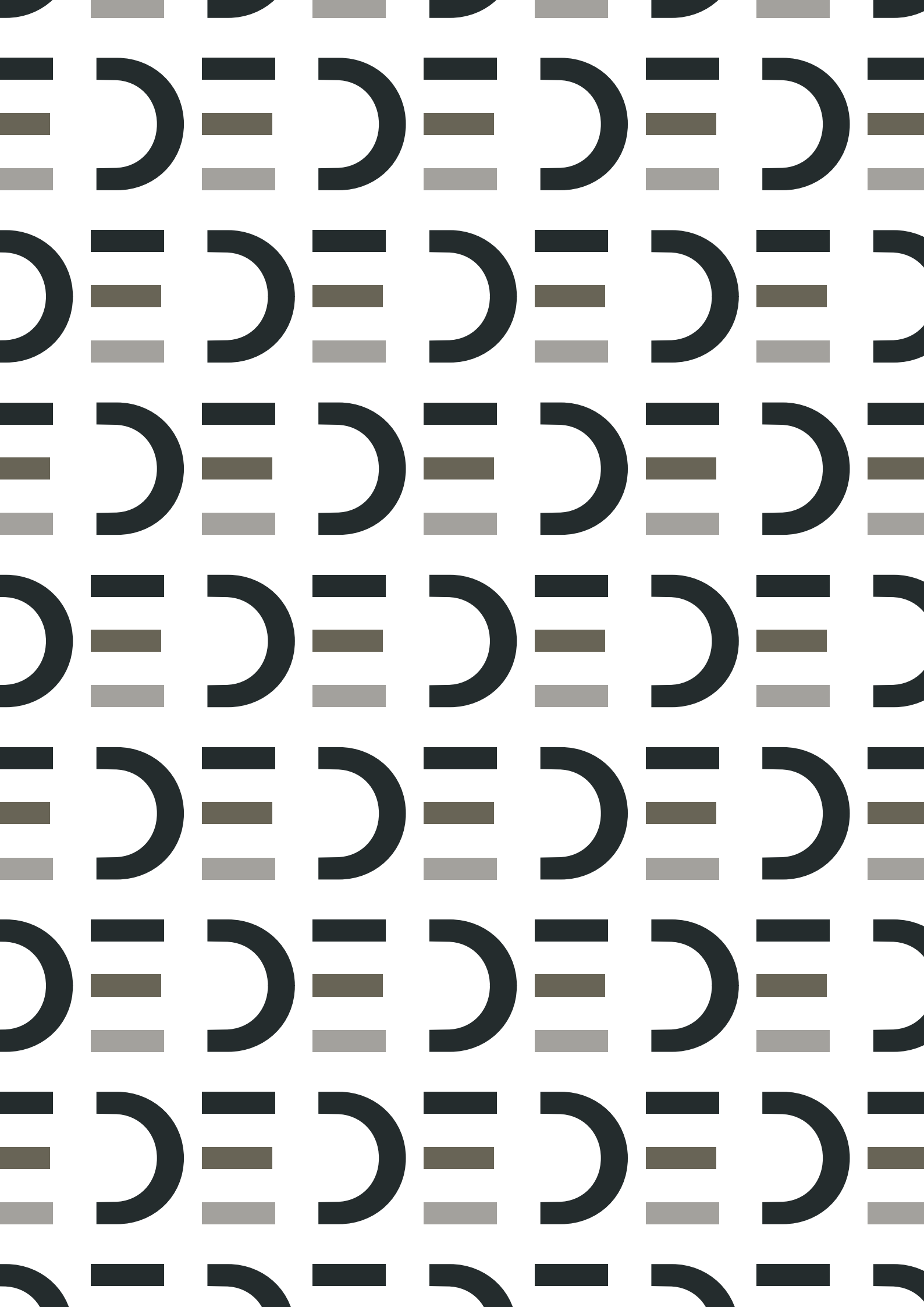
85 Frans Indongo Street, Windhoek, Namibia

T: +264 61 251148

F: +264 61 251158

E: info@dream-engineering.com

W: www.dream-engineering.com





DREAM ENGINEERING
Excellence Delivered

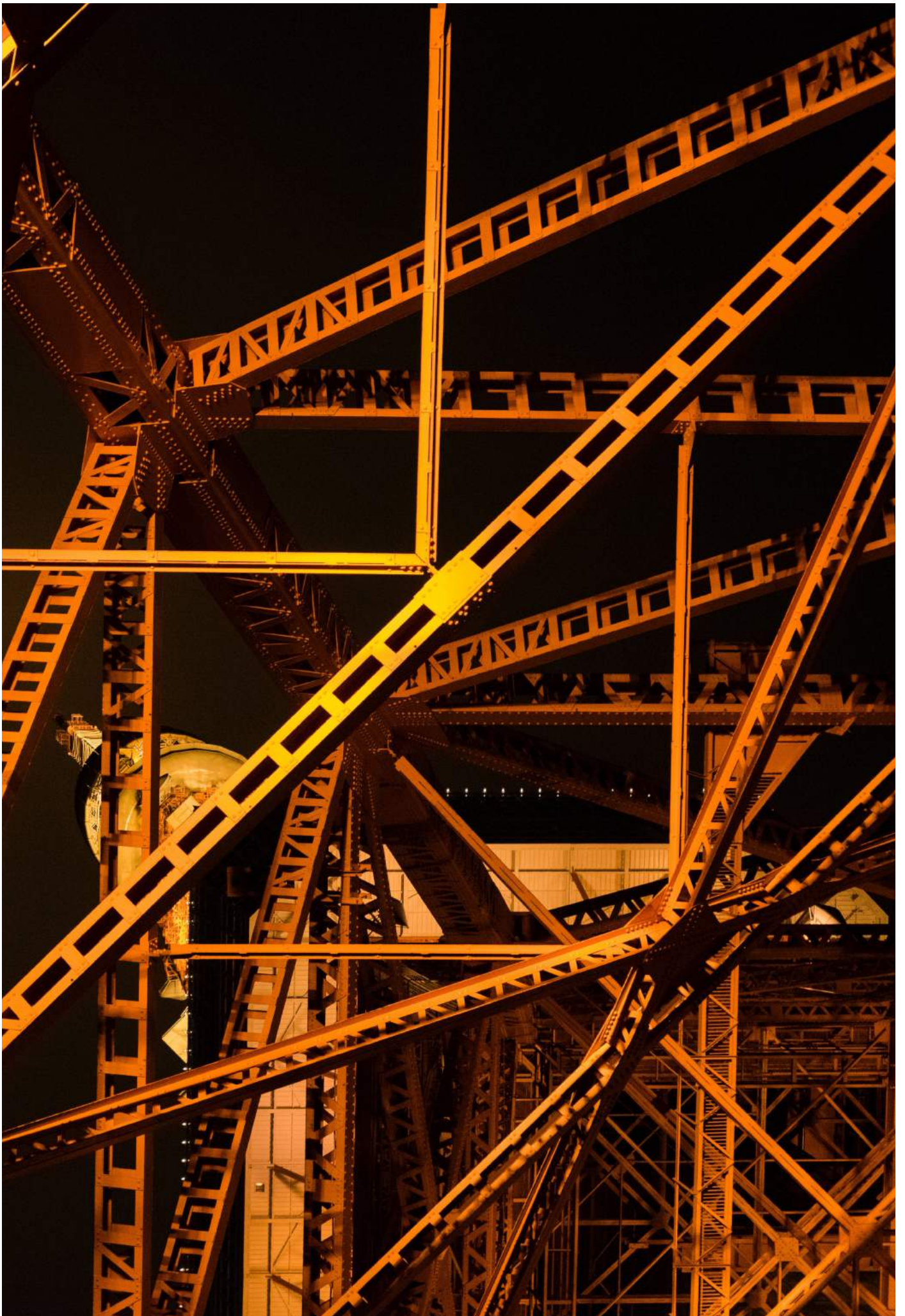




TABLE OF CONTENTS

05	About us
06	Values
08	Company Structure
08	Directors
09	Associates
10	Our Approach
11	Sector Expertise
11	Buildings
11	Civil Infrastructure & Transportation
12	Structural Health Monitoring & Condition Assessment
12	Electrical & Mechanical
13	Our Experience
13	Buildings
16	Civil Infrastructure & Transportation
19	Structural Health Monitoring & Condition Assessment
23	Electrical & Mechanical
27	Contact Details



About Us

Dream Engineering (Pty) Ltd is an African engineering design and consultancy firm, based in Windhoek, Namibia.

We offer multidisciplinary solutions to an array of engineering challenges.

Our services range from conceptual design and economic feasibility studies all the way through detailed design to post-construction structural health monitoring. Effective project management and construction supervision are quintessential to the success of our projects. Dream Engineering's mission is its commitment to balance structural integrity with optimal and efficient design, regardless of the complexity and locality of the project.

Dream engineering commits itself to providing the best possible engineering solutions to the communities in which it operates, by serving the needs of the eventual end user and the financial contributors. Our engineering solutions comprise a blend of expertise in engineering design, cutting-edge structural health monitoring techniques that employs emerging technologies and

comprehension of our cultural heritage. This all culminates in a unique melting pot that produces front line solutions to African challenges by Africans.

Our multidisciplinary team operates in a space where the bare minimum requirement is excellence and we strive to exceed our client's expectations with each project that we undertake. The long-term mindset that we adopt allows the contextualization of various life-cycles stages including immediate construction, operation, maintenance and eventual decommissioning of infrastructure to produce economically and environmentally sustainable engineering solutions. Our relationships with specialist consultants further ensure continued commitment to diffuse engineering excellence throughout Africa and beyond.

Values

Our resolute commitment to providing cutting-edge engineering solutions are founded on core values.

-  **Excellence**
-  **Sustainability**
-  **African Heritage**
-  **Ethics & Promotion of Equal Opportunities**
-  **Integrity**
-  **Technological**
-  **Innovation**
-  **Social Equity**



Company Structure

The directors and associates of Dream Engineering (Pty) Ltd have accumulated an experience profile of over 50 years in the construction industry. Fuelled with a sense of purpose and self-empowerment the company was formed and gradually crafted to provide cutting-edge engineering solutions to the African construction industry.

Directors



Camillo Shiweda
MSc (Eng), BSc (Eng), B(Eng)
Managing Director - Civil
& Structural Engineering



Valantino James
PrEng (ECN), MSc (Structural), BSc (Civil)
Operations Lead - Civil &
Structural Engineering



Lwazi Mlomo
N.Dip(Eng)
Projects Lead- Civil &
Structural Engineering

Associates



Dr. Kabani Matongo
PhD, MSc (Structural), BSc (Civil)
Structural Health Monitoring



Dr. Philemon Arito
PhD, MSc (Civil), BSc (Civil)
Concrete Materials and
Condition Assessment



Magdalena Zauana
B.Tech(Eng), N.Dip(Eng), PG.Dip(BA)
Mechanical Engineering



Rudhi Wanamene
B.Tech(Eng), N.Dip(Eng)
Civil Engineering



Teeleleni Tashiya
N.Dip(Eng)
Electrical Engineering



Our Approach

At Dream Engineering (Pty) Ltd our multidisciplinary team approaches each stage of the design with a life cycle view to develop engineering solutions that are sustainable and integrate seamlessly with every other stage. That is sustainability from an environmental, economic and social viewpoint.

Regardless of the dimension, complexity or locality of the project, we develop unique solutions for new and existing infrastructure. For each project our team invokes the best engineering practices, that involves a collaborative approach between the client, interested stakeholders and building design teams to produce exceptional engineering solutions.

Design

Construction Supervision

Tender Support

PROJECT MANAGEMENT

Feasibility

Concept & planning

Operation & Maintenance

Sector Expertise

The efficacy of infrastructure integration into the environment is multifaceted and relies heavily on success of various complex components. At Dream Engineering we take pride in our focused contemplation of each design aspect that contributes to the successful integration of the projects that we undertake in four main spheres, which include buildings, civil infrastructure & transportation, electrical & mechanical engineering, and structural health monitoring & condition assessment.

Our engineers have worked for some of the largest consulting firms in Namibia and have held key leadership roles at prestigious academic institutions in South Africa. Our engineers have consulted on a variety of engineering projects in Namibia, South Africa, Zambia, Kenya and Ghana, which all contribute to their prowess in listed design components.

Buildings

- Structural engineering
- Foundation design
- Rehabilitation and refurbishment design
- Building information modelling (BIM)
- Geotechnical Studies
- Sustainable building design
- Excavations and earthworks Design
- Project management

Civil Infrastructure & Transportation

- Master planning and urban development
- Infrastructure design
- Bridge design
- Transport studies and strategic planning
- Drainage design
- Pavement design
- Stations and multimodal terminal design
- Water treatment
- Environmental impact studies
- Contamination studies

Structural Health Monitoring & Condition Assessment

- Ambient vibration testing
- Forced vibration testing
- Finite element modelling (Linear and non-linear)
- Reinforcement cover surveys
- Impact echo testing
- Instrumentation and monitoring
- Condition assessment

Electrical & Mechanical

- Renewable energy
- Energy studies
- Infrastructure design
- Mechanical and HVAC design
- Fire and safety design
- Electrical design and energy systems
- On-site technical support and supervision
- Telecommunications and security
- Elevators and escalators
- Lighting design



Our Experience

During the period from 2011 to 2019, directors and associates of Dream Engineering (Pty) Ltd have worked on various projects in buildings, civil infrastructure & transportation, electrical & mechanical engineering, and structural health monitoring & condition assessment. The projects listed below were either undertaken directly by the company or they formed part of the director's and associates' experience in previous employment contracts.

Buildings

Khorixas Vocational Training Centre



Construction Value Description

N\$ ±800 Million

Provision of structural steel and concrete design as well as construction supervision for new Vocational Training Centre in Khorixas, Kunene Region. Scope of works included RC foundation, column, slab and beam designs; steel portal frame and steel connection designs.

Consulting Services Completion

Civil and structural engineering
Ongoing

House Hangula



Construction Value Description

N\$ ±4 Million

Design and construction supervision of private residence in Hochland Park, Windhoek. Scope of works included: structural concrete slabs, beams, columns, retaining wall as well as structural steel canopy and connection details.

Consulting Services Completion

Civil and structural engineering
2019

Omuhonga Combined School



Construction Value Description

N\$ ±90 Million

Provision of structural steel and concrete design as well as construction supervision for new combined school in Omuhonga. Scope of works included RC foundation, column, slab and beam designs; steel truss and steel connection designs.

Consulting Services Completion

Civil and structural engineering
Ongoing

Oranjemund Business Park



Construction Value Description

N\$ ±12 Million

Provision of structural steel, concrete design and timber design for SME business park in Oranjemund. Scope of works included RC foundation and column designs, steel portal frame and steel connection designs.

Consulting Services Completion

Civil and structural engineering
Ongoing

House Vilho



Construction Value Description

N\$ ±3 Million

Design and construction supervision of private residence in Pioneers Park Extension I, Windhoek. Scope of works included: structural concrete slabs, beams, columns, retaining wall as well as structural steel canopy and connection details.

Consulting Services Completion

Civil and structural engineering
2017

Civil Infrastructure & Transportation

New Ndamono PHC Clinic, Onankali



Construction Value	N\$ ±20 Million
Description	Bulk Earth works, access roads and parking, water and sewerage
Consulting Services	Planning, design, contract documentation, project management and construction supervision
Completion	2018

New Oluno Road for Ondangwa Town Council



Construction Value	N\$ ±12 million
Description	Pavement design, road alignment, layer works and construction supervision of new road for Ondangwa Town Council
Consulting Services	Transport planning and design consulting services

Upgrading Storm Water Channel at Bank of Namibia, Oshakati



Construction Value	N\$ ±2 Million
Description	Hydrology design, channel sizing and construction drawing provision of stormwater channel upgrading for Bank of Namibia.
Consulting Services	Planning, design, contract documentation, project management and construction supervision

Construction of Services at Oranjemund Extension 10



Construction Value	N\$ ±14 Million
Description	Design and construction supervision of roads, sewer reticulation and water supply networks of Oranjemund Extension 10.
Consulting Services	Planning, design, contract documentation, project management and construction supervision
Completion	2018

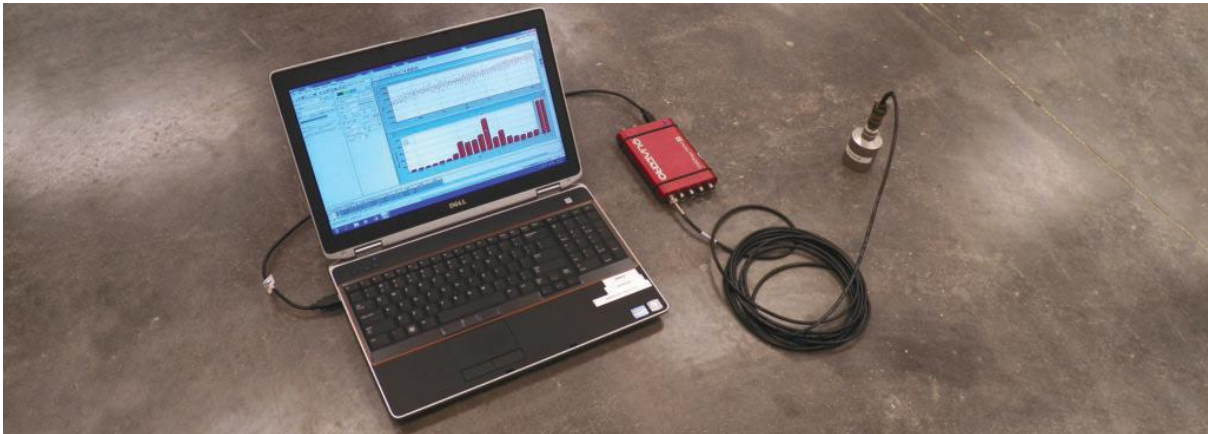
Construction of Services for Witvlei, Omaheke Region



Construction Value	N\$ ±16 Million
Description	Sewerage Network and Waste Water Treatment Plant for Witvlei
Consulting Services	Planning, design, contract documentation, project management and construction supervision
Completion	2018

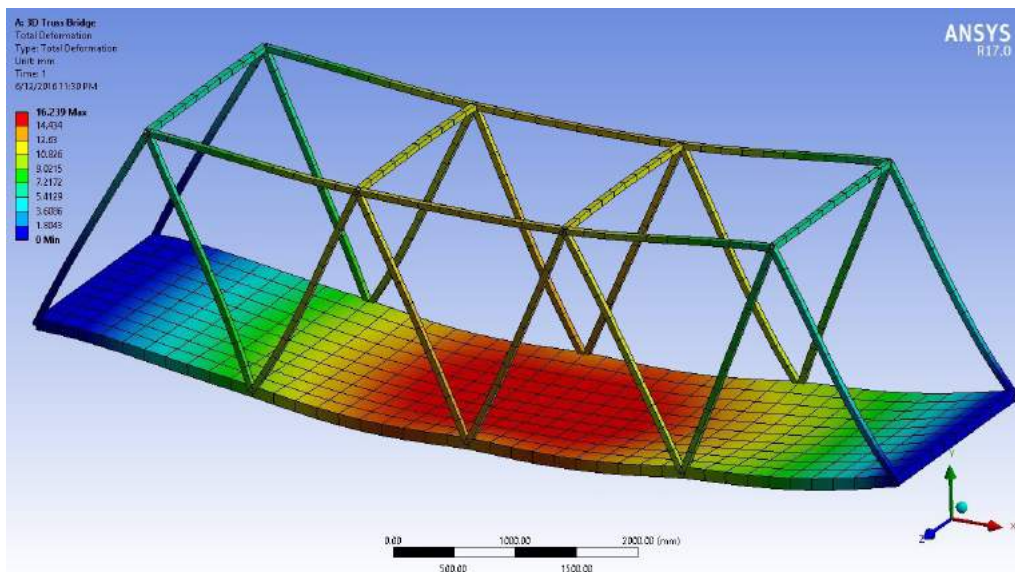
Structural Health Monitoring & Condition Assessment

Cape Town International Convention Centre Floor Vibration Testing



<p>Construction Value Description</p> <p>Consulting Services Completion</p>	<p>Undisclosed</p> <p>Forced vibration testing and finite element modelling analysis to investigate use of tuned mass dampers as vibration mitigation.</p> <p>Field vibration testing and finite element modelling</p> <p>2019</p>
---	--

Transnet Cast Iron Bridge Fatigue Assessment



<p>Construction Value Description</p> <p>Consulting Services</p>	<p>Undisclosed</p> <p>Finite element modelling of old cast iron bridges and fatigue assessment.</p> <p>Finite Element modelling</p>
--	---

Alkali Silica Reaction Modelling Nalubaale Dam, Uganda



Construction Value Description	Undisclosed
Consulting Services	Finite element modelling of Alkali Silica Reaction on Nalubaale dam for Eskom Uganda. Finite Element modelling

Edikan Gold Mine, Ghana



Construction Value Description	Undisclosed
Consulting Services	Conduct visual assessment of test cores from the main and conduct tests on the following material properties: compressive strength, concrete durability indexes (DIs) and petrography as well as analysis of the chloride profiles and carbonation depths in the concrete. Structural condition assessment and laboratory testing

Black River Railway Bridge Condition Assessment, Cape Town Harbour



Construction Value Description

Undisclosed

Assess the extent of concrete deterioration in the structure by visual assessment as well as laboratory testing which included: chloride profiling, carbonation depths, compressive strength and other specialised material tests that might have been deemed necessary e.g., Alkali Silica Reaction.

Consulting Services

Structural condition assessment and laboratory testing

Ashton Arch Bridge Non-destructive Testing



Construction Value Description

Undisclosed

Impact echo and ground penetrating radar testing carried out on bridge post-tensioned tie beam.

Consulting Services Completion

Impact echo and ground penetrating radar testing
2019

Excelsior Wind Farm: Wind Turbine Foundation Non-destructive testing



Construction Value	Undisclosed
Description	Impact echo testing carried out on wind turbine foundation.
Consulting Services	Impact echo testing
Completion	2019

Electrical & Mechanical

New Ohangwena Education Directorate Offices in Eenhana



Construction Value	N\$ ±10 Million
Description	Design and supervision of MV reticulation, LV reticulation, telecommunications network and electronics works for office building.
Consulting Services	Electrical engineering consulting services
Completion	Ongoing

MICT Gobabis



Construction Value	N\$ ±4 Million
Description	Design and supervision of LV reticulation, telecommunications network and electronics works for Ministry of Information and Communication Technology office building in Omaheke region.
Consulting Services	Electrical engineering consulting services
Completion	2016

Standard Bank – Various branches in Namibia



Construction Value	N\$ ±14 Million
Description	Evaluation, re-design, design and supervision of electrical installations for Standard Bank branches across Namibia. The project included MV reticulation, LV reticulation and telecommunications networks.
Consulting Services	Electrical engineering consulting services
Completion	Ongoing

Ondangwa Cashbuild Trading Store, Oshana Region

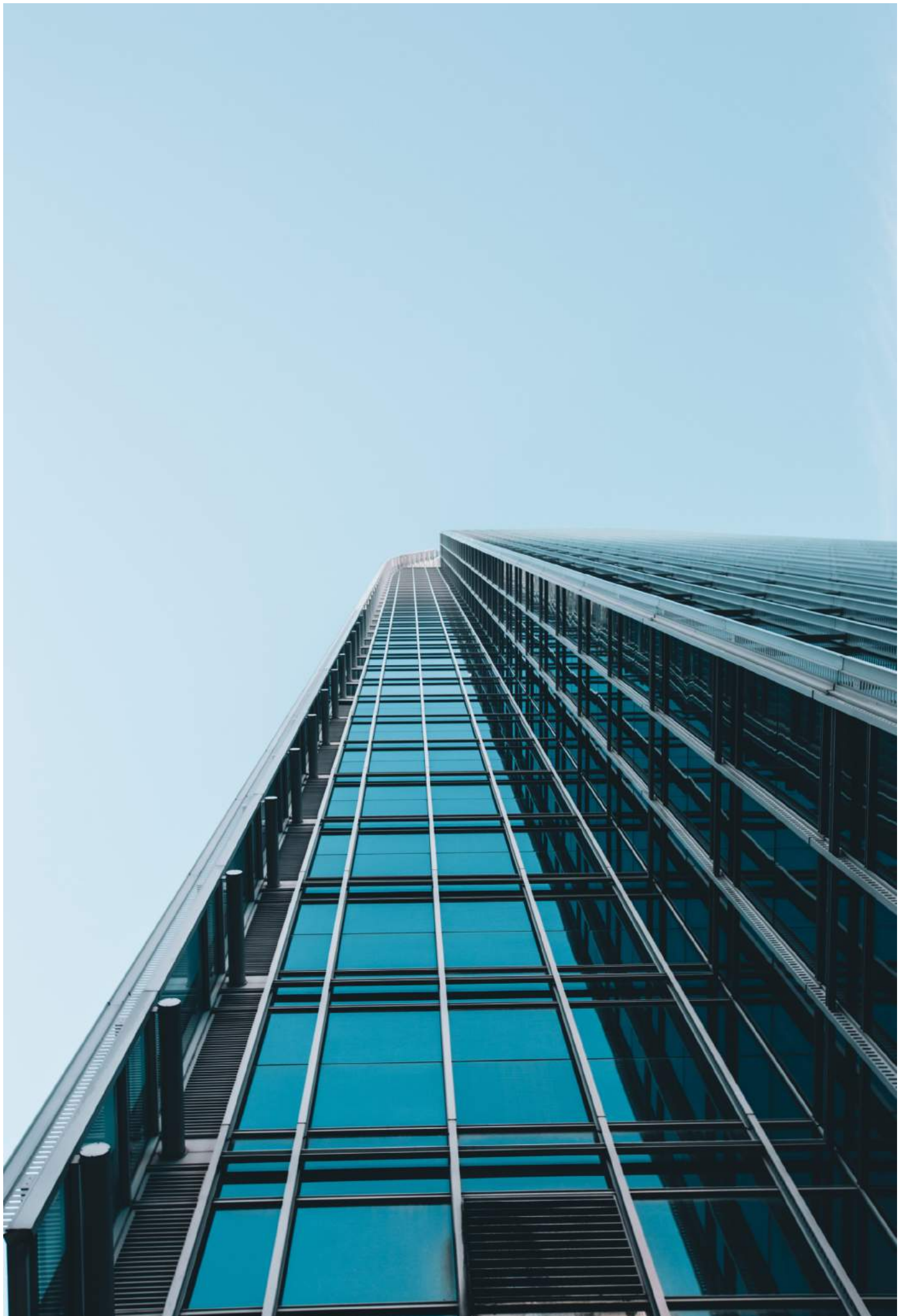


Construction Value	N\$ ±16 Million
Description	Air conditioning and ventilation systems, water reticulation designs and installation supervision for Cashbuild store.
Consulting Services	Mechanical engineering consulting services
Completion	2018

Accommodation Barracks for Otavi Police Station, Otjozondjupa Region



Construction Value	N\$ ±11 Million
Description	Design and installation supervision of kitchen equipment, water reticulation and solar hot water system for the Ministry of Safety and Security.
Consulting Services	Mechanical engineering consulting services
Completion	2016



Contact Details

Dream Engineering (Pty) Ltd
P. O. Box 23399, Windhoek
Reg. No. 2016/0062



Windhoek Office

85 Frans Indongo Street
Windhoek, Namibia

T: +264 61 251148
F: +264 61 251158
E: info@dream-engineering.com

Ondangwa Office

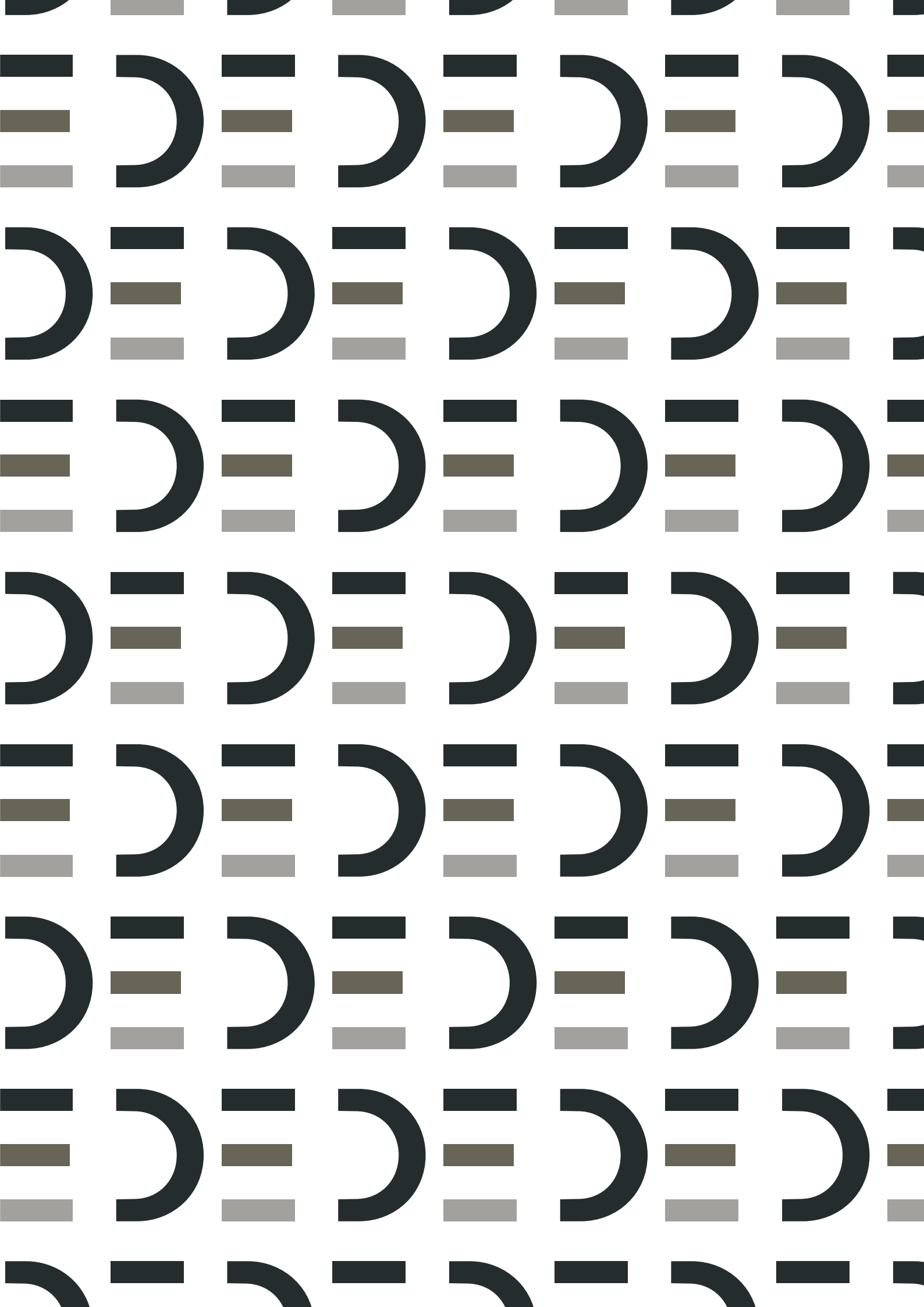
Erf 1619 Ondangwa-Oshikango Main Road
Young Life Complex
Omwandi, Ondangwa

T: +264 811246730
F: +264 88 621 064
E: info@dream-engineering.com

Walvis Bay Office

6 Adelheid halu !Gontes Steet
Kuisebmond, Walvis Bay

M: +264 811241616
F: +264 61 251158
E: info@dream-engineering.com





Visit us at
www.dream-engineering.com