



2  
0  
2  
5

# COMPANY PROFILE

**DREAM ENGINEERING**  
Excellence Delivered

**Directors:**

**Camillo Shiweda** *B(Eng) B.Sc (Eng) M.Sc (Eng) Inc. Eng*

**Valentino James** *B.Sc (Eng) , M.Sc (Structural) Pr. Eng*

**Lwazi Mlomo** *N.Dip(Eng)*

**Simon Shikokola** *B.Tech (Civil Eng)(Urban) Inc. Eng*

**Alexander Dos Ramos** *B. Eng (Civil), Pr. Eng*

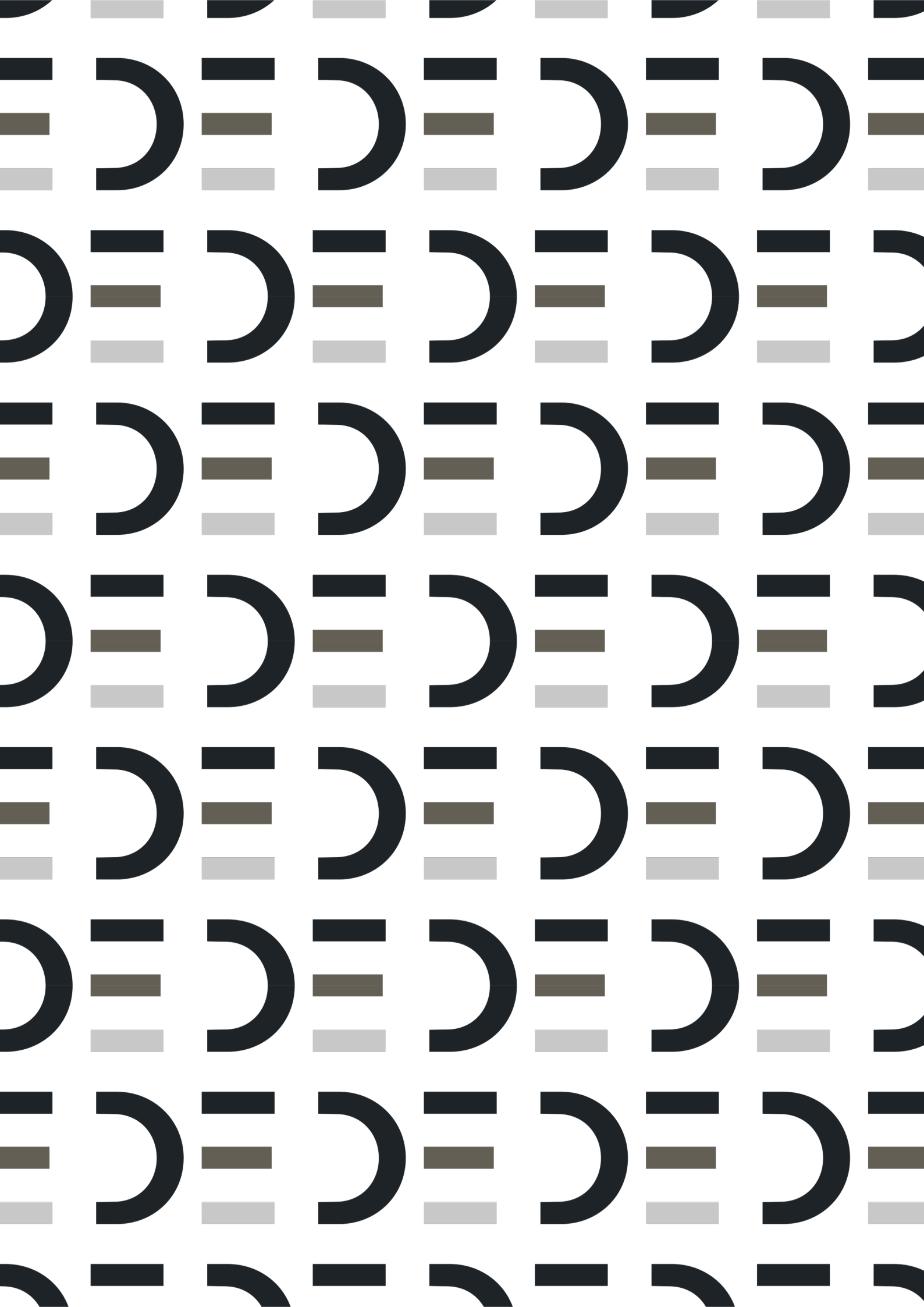
106 Robert Mugabe street, Windhoek, Namibia

T: +264 61 251148

F: +264 61 251158

E: [info@dream-engineering.com](mailto:info@dream-engineering.com)

W: [www.dream-engineering.com](http://www.dream-engineering.com)





# **DREAM ENGINEERING**

**Excellence Delivered**







# TABLE OF CONTENTS

07	About Us
08	Mission & Vision Statement
09	Values
11	Company Structure
12	Our Approach
13	Sector Expertise
15	Our Experience
34	Project List
39	Contact Details





# About Us

---

Dream Engineering (Pty) Ltd is an African engineering design and consultancy firm, based in Windhoek, Namibia. We offer multidisciplinary solutions to an array of engineering challenges.

Our services range from conceptual design and economic feasibility studies all the way through detailed design to post-construction structural health monitoring. Effective project management and construction supervision are quintessential to the success of our projects. Dream Engineering's mission is its commitment to balance structural integrity with optimal and efficient design, regardless of the complexity and locality of the project.

Dream engineering commits itself to providing the best possible engineering solutions to the communities in which it operates, by serving the needs of the eventual end user and the financial contributors. Our engineering solutions comprise a blend of expertise in engineering design, cutting-edge structural health monitoring techniques that employs emerging technologies and comprehension of our cultural heritage. This all culminates in a unique melting pot that produces front line solutions to African challenges by Africans.

Our multidisciplinary team operates in a space where the bare minimum requirement is excellence and we strive to exceed our client's expectations with each project that we undertake. The long-term mindset that we adopt allows the contextualization of various life-cycles stages including immediate construction, operation, maintenance and eventual decommissioning of infrastructure to produce economically and environmentally sustainable engineering solutions. Our relationships with specialist consultants further ensure continued commitment to diffuse engineering excellence throughout Africa and beyond.

# Mission Statement

---

At Dream Engineering, we are committed to delivering sustainable, innovative, and environmentally conscious engineering solutions that drive the future of Africa's construction and engineering industry. With a focus on excellence, efficiency, and long-term impact, we integrate cutting-edge technology and industry best practices to design and implement projects that enhance infrastructure, improve communities, and contribute to a greener, more resilient future. Our mission is to not only meet the evolving needs of our clients but also to foster economic growth and environmental responsibility through visionary engineering.

# Vission Statement









---

Our vision is to be the leading force in shaping the future of Africa's engineering industry by setting new standards in service excellence, sustainable development, and innovative engineering practices. We envision a continent where infrastructure and technology harmonize with environmental stewardship, creating smart, resilient, and future-ready communities. Through continuous research, collaboration, and investment in cutting-edge engineering solutions, we aim to revolutionize the industry while leaving a lasting impact on society and the environment.



# Values

Our resolute commitment to providing cutting-edge engineering solutions are founded on core values.

-  Excellence
-  Sustainability African
-  Heritage Ethics
-  Promotion of  
Equal Opportunities
-  Integrity
-  Technological
-  Innovation
-  Social Equity





## Company Structure

The directors and associates of Dream Engineering (Pty) Ltd have accumulated an experience profile of over 50 years in the construction industry. Fuelled with a sense of purpose and self-empowerment the company was formed and gradually crafted to provide cutting-edge engineering solutions to the African construction industry.

### Dream Team



**Camillo Shiweda**

MSc (Eng), BSc (Eng), B(Eng), Inc.Eng (structural)  
Managing Director – Civil & Structural  
Engineering



**Simon Shikokola**

B.Tech (Civil Eng)(Urban) Inc.Eng  
Director – Transport  
Infrastructure



**Lwazi Mlomo**

N.Dip(Eng)  
Director & Projects Lead –  
Civil & Structural Engineering



**Valontino James**

PrEng (ECN), MSc (Structural), BSc (Civil)  
Director & Operations Lead –  
Civil & Structural Engineering



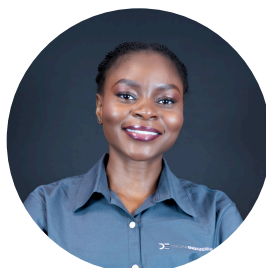
**Alexander Dos Ramos**

B. Eng (Civil), Pr. Eng (Civil)  
Director – Water & Services



**Esther H.N Nuuyoma**

B. Eng. (Civil Eng.)  
Project Lead – Project Management,  
Civil & Infrastructure Engineering



**Sesilia Amon**

BA Hons . Records & Archives Management  
Procurement & Document  
Administration

# Our Approach

---

At Dream Engineering (Pty) Ltd our multidisciplinary team approaches each stage of the design with a life cycle view to develop engineering solutions that are sustainable and integrate seamlessly with every other stage. That is sustainability from an environmental, economic and social viewpoint. Regardless of the dimension, complexity or locality of the project, we develop unique solutions for new and existing infrastructure. For each project our team invokes the best engineering practices, that involves a collaborative approach between the client, interested stakeholders and building design teams to produce exceptional engineering solutions.

Design

Construction Supervision

Tender Support

## PROJECT MANAGEMENT

Feasibility

Concept & planning

Operation & Maintenance



# Sector Expertise

The efficacy of infrastructure integration into the environment is multifaceted and relies heavily on the success of various complex components. At Dream Engineering we take pride in our focused contemplation of each design aspect that contributes to the successful integration of the projects that we undertake in main engineering spheres, which include buildings, civil infrastructure, transportation, electrical & mechanical engineering, structural health monitoring & condition assessment.

Our engineers have worked for some of the largest consulting firms in Namibia and have consulted on a variety of engineering projects in Namibia & South Africa, which all contributed to their prowess in listed design aspects.

## Buildings

- Structural Engineering
- Foundation Design
- Rehabilitation and Refurbishment Design
- Building Information Modelling (BIM)
- Geotechnical Studies
- Sustainable Building Design
- Earthworks Platform Design
- Project Management

## Civil Infrastructure & Transportation

- Master planning and urban development
- Infrastructure Design
- Bridge Design
- Transport studies and strategic planning
- Drainage Design
- Pavement Design
- Stations and multimodal terminal design
- Water treatment
- Environmental impact studies
- Contamination studies
- Road Design ( Gravel, Low Volume Seal , Bitumen Standards)

### Structural Health Monitoring

- Ambient vibration testing
- Forced vibration testing
- Finite element modelling (Linear and non-linear)
- Reinforcement cover surveys
- Impact echo testing
- Instrumentation and monitoring
- Condition assessment

### Electrical & Mechanical Engineering

- Renewable energy
- Energy studies
- Infrastructure design
- Mechanical and HVAC design
- Fire and safety design
- Electrical design and energy systems
- On-site technical support and supervision
- Telecommunications and security
- Elevators and escalators
- Lighting design



# Our Experience

During the period from 2011 to 2024, directors and associates of Dream Engineering (Pty) Ltd have worked on various projects in buildings, civil infrastructure & transportation, electrical & mechanical engineering, and structural health monitoring & condition assessment. The projects listed below were either undertaken directly by the company or they formed part of the directors' and associates' experience in previous employment contracts.

## Buildings

### Khorixas Vocational Training Centre



Construction Value | N\$ ±80 Million

Description | Provision of structural steel and concrete design as well as construction supervision for new Vocational Training Centre in Khorixas, Kunene Region. Scope of works included RC foundation, column, slab and beam designs; steel portal frame and steel connection designs.

Consulting Services | Civil and structural Designs

Completion | 2020 - 2024



## Grootfontein Fire Station



Construction Value	N\$ ±6 Million
Description	Provision of structural steel and concrete design as well as construction supervision for the Port 22548 Fire Station in Grootfontein, Namibia.. Scope of works included RC foundation, column, slab and beam designs; steel portal frame and steel connection designs.
Consulting Services Completion	Civil and structural engineering Ongoing

## Kaptau Packaging Factory



Construction Value	N\$ ±10 Million
Description	Provision of structural steel and concrete design as well as construction supervision for the new Kaptau Packaging Factor in Windhoek, Namibia. Scope of works included RC foundation, column, slab and beam designs; steel portal frame and steel connection designs.
Consulting Services Completion	Civil and structural engineering 2021-2023

## Eluwa Special School



Construction Value

N\$ 13 Million

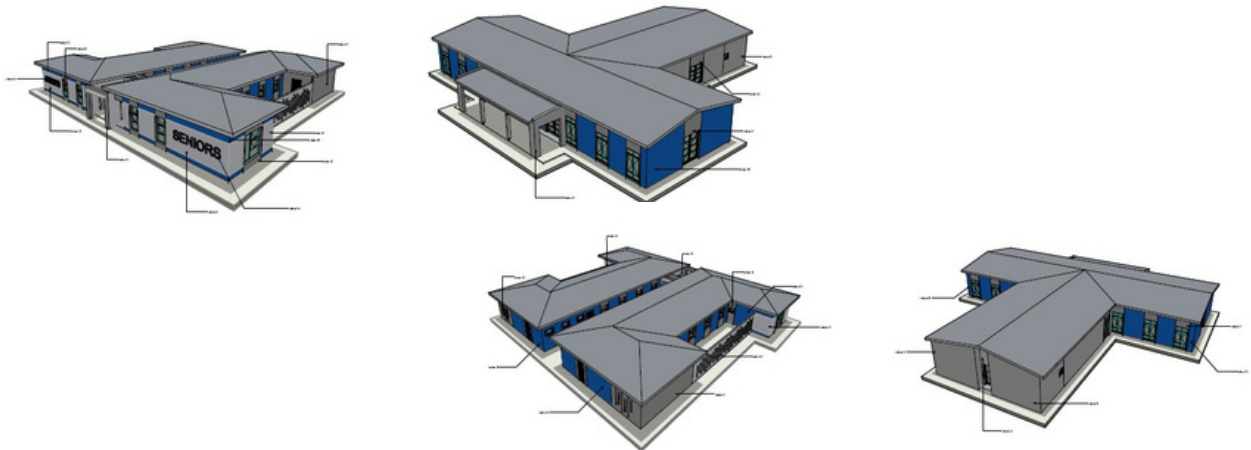
Description

Provision of structural steel and concrete design as well as construction supervision for the new Eluwa Special School in Oshana Region. Scope of works included RC foundation, column, slab and beam designs; steel portal frame and steel connection designs.

Consulting Services  
Completion

Civil and structural engineering  
2022

## Groot Aub School



Construction Value

N\$ 20 Million

Description

Provision of structural steel and concrete design as well as construction supervision for additions for the primary school in Groot Aub, Khomas Region. Scope of works included RC foundation, column, slab and beam designs; steel portal frame and steel connection designs.

Consulting Services  
Completion

Civil and structural engineering  
2022



## Ondjanjo School



Construction Value	N\$ 14Million
Description	Provision of structural steel and concrete design as well as construction supervision for the new Onjanjo School in Oshana Region. Scope of works included RC foundation, column, slab and beam designs; steel portal frame and steel connection designs.
Consulting Services Completion	Civil and structural engineering 2022

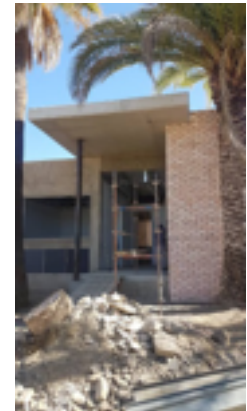
## Grootfontein Modern Open Market



Construction Value	N\$ ±43 Million
Description	Provision of structural steel and concrete design as well as construction supervision for the Modern Open Market in Grootfontein, Namibia. Scope of works included RC foundation, column, slab and beam designs; steel portal frame and steel connection designs.
Consulting Services Completion	Civil and structural engineering 2021-Ongoing



## House Hangula



Construction Value	N\$ ±4 Million
Description	Design and construction supervision of private residence in Hochland Park, Windhoek. Scope of works included: structural concrete slabs, beams, columns, retaining wall as well as structural steel canopy and connection details.
Consulting Services Completion	Civil and structural engineering 2019

## Omuhonga Combined School



Construction Value	N\$ ±90 Million
Description	Provision of structural steel and concrete design as well as construction supervision for new combined school in Omuhonga. Scope of works included RC foundation, column, slab and beam designs; steel truss and steel connection designs.
Consulting Services Completion	Civil and structural engineering 2023

## Oranjemund Business Park



Construction Value	N\$ ±12 Million
Description	Provision of structural steel, concrete design and timber design for SME business park in Oranjemund. Scope of works included RC foundation and column designs, steel portal frame and steel connection designs.
Consulting Services Completion	Civil and structural engineering Ongoing

## House Vilho



Construction Value	N\$ ±3 Million
Description	Design and construction supervision of private residence in Pioneers Park Extension 1, Windhoek. Scope of works included: structural concrete slabs, beams, columns, retaining wall as well as structural steel canopy and connection details.
Consulting Services Completion	Civil and structural engineering 2017



House Haludilu



Construction Value	N\$ ±6 Million
Description	Design and construction supervision of private residence in kleine Kuppe Erf 817, Windhoek. Scope of works included: structural concrete slabs, beams, columns, retaining wall as well as structural steel canopy and connection details. Client : Mr & Mrs Haludilu
Consulting Services Completion	Structural engineering Ongoing

House Shiweda



Construction Value	N\$ ±9 Million
Description	Design and construction supervision of private residence in Auasblik Erf 887, Windhoek. Scope of works included: structural concrete slabs, beams, columns, retaining wall as well as structural steel canopy and connection details. Client : PJ Shiweda
Consulting Services Completion	Civil and structural engineering Ongoing



## Civil Infrastructure & Transportation

### New Ndamono PHC Clinic, Onankali



Construction Value	N\$ ±20 Million
Description	Bulk Earth works, access roads and parking, water and sewerage Planning, design, contract documentation, project management and construction supervision
Consulting Services Completion	Civil Engineering Design 2018

### MR 74 Road Upgrade: Grootfontein-Rooidag Gate (74km)



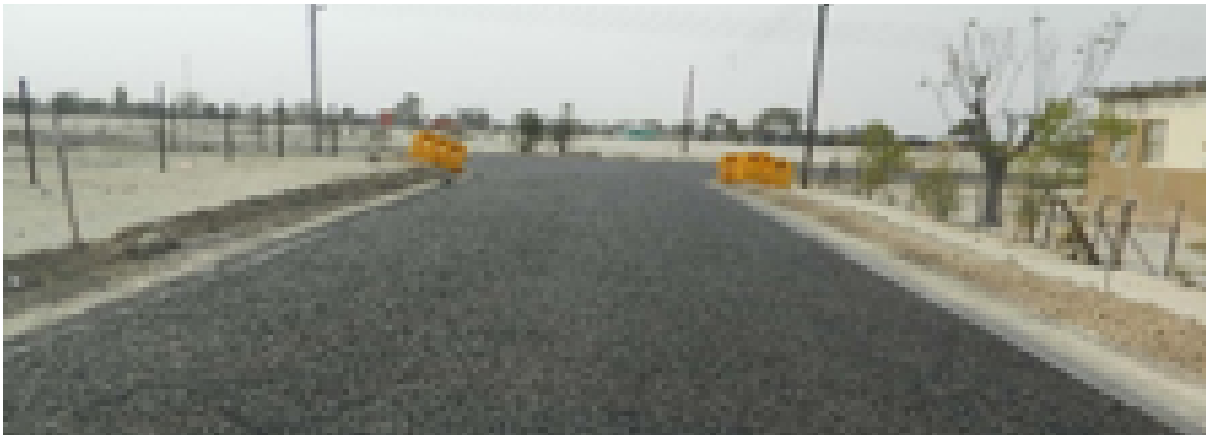
Construction Value	N\$ ±190 Million
Description	Provision of consultancy services for the detailed design, tender documentation, contract administration and site supervision of the upgrading to low volume seal (LVS) standards for Section A: MR 74: Grootfontein-Rooidag gate (74km) for Roads Authority in the Otjozondjupa Region.
Consulting Services Completion	Transport engineering 2021-Ongoing

DR3507 Road Upgrade: Bukalo-Muyako-Ngoma Road  
in Zambezi Region



Construction Value	N\$ ±250 Million
Description	Provision of consultancy services for the detailed design, tender documentation, contract administration and site supervision of the upgrading to low volume seal (LVS) standards for Roads Authority in the Zambezi Region. Transport engineering
Consulting Services Completion	2022-Ongoing

New Oluno Road for Ondangwa Town Council



Construction Value	N\$ ±12 million
Descriptions	Pavement design, road alignment, layer works and construction supervision of new road for Ondangwa Town Council Transport planning and design consulting services
Consulting Services Completion	Transport Engineering Ongoing



## Upgrading Storm Water Channel at Bank of Namibia, Oshakati



Construction Value | N\$ ±2 Million

Description | Hydrology design, channel sizing and construction drawing provision of storm water channel upgrading for Bank of Namibia. Planning, design, contract documentation, project management and construction supervision.

Consulting Services | Civil Engineering  
Completion | 2019

## Construction of Services at Oranjemund Extension 10



Construction Value | N\$ ±14 Million

Description | Design and construction supervision of roads, sewer reticulation and water supply networks of Oranjemund Extension 10. Planning, design, contract documentation, project management and construction supervision

Consulting Services | Transport Engineering  
Completion | 2018



Construction of Services for Witvlei, Omaheke Region



Construction Value	N\$ ±16 Million
Description	Sewerage Network and Waste Water Treatment Plant for Witvlei Planning, design, contract documentation, project management and construction supervision.
Consulting Services Completion	Civil Engineering 2018

Ondangwa Construction of water & Sewer Reticulation in Ext 30



Construction Value	N\$ 8.6 Million
Description	The Planning, Design, Preparing Bid Documentation and Construction Supervision.
Consulting Services Completion	Civil Engineering 2022

## New Construction of Sewerage Treatment Plant in Oshakati



Construction Value	N\$ ±47 Million
Description	Construction of a new 1500m <sup>3</sup> Sewerage treatment plant which consists of a platform, access gravel roads, bulk concrete & reinforcement works, Electrical & Mechanical installations.
Consulting Services	Civil Structural & Mechanical engineering services
Completion	Ongoing

## Rehoboth Design & Construction Supervision of Municipal Services



Construction Value	N\$ ±16 Million
Description	Planning, Design and Constriction Supervision of Bulk Municipal Services (Roads, Storm-water, water and Sewer Reticulation) Mechanical engineering consulting services (Phase 1 2024) Phase 2 .
Consulting Services	Civil Engineering
Completion	Ongoing



Henties Bay Planning, Design & Construction Supervision of Bulk Municipal Services



Construction Value	N\$ 22 Million
Description	(Roads, Storm water, Water and Sewer Reticulation) for Extension 12 Henties Bay Civil Structural engineering services.
Consulting Services Completion	Civil Structural Engineering 2023

DR3630 : Onyati - Onyuulaye - Onkumbula (70Km)

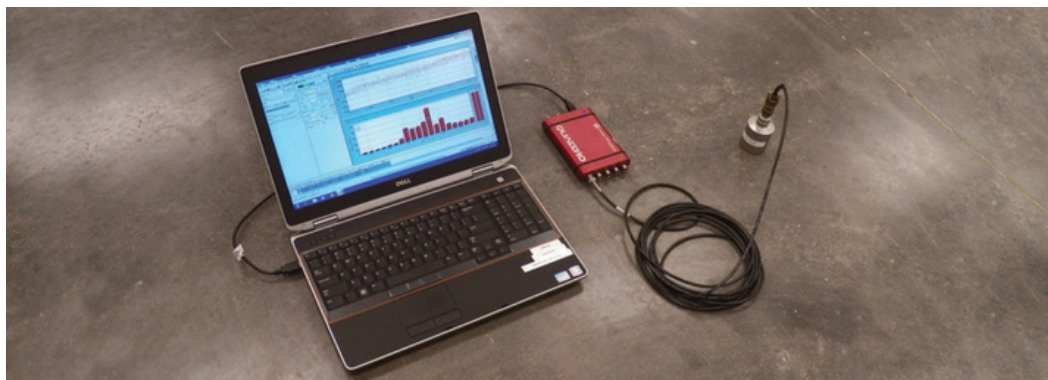


Construction Value	N\$ ±250 Million
Description	Detailed Design , Tender Documentation , Contract Administration & Site Supervision Of The Construction of DR 3630 : ONYATI - ONYUULYE - ONKUMBULA (70KM).
Consulting Services Completion	Transportation Engineering 2025 - Ongoing



## Structural Health Monitoring & Condition Assessment

### Cape Town International Convention Centre Floor Vibration Testing



Construction Value | Undisclosed

Description | Forced vibration testing and finite element modelling analysis to investigate use of tuned mass dampers as vibration mitigation. Field vibration testing and finite element modelling.

Consulting Services | Structural Engineering  
Completion | 2019

### Excelsior Wind Farm: Wind Turbine Foundation Non-destructive testing

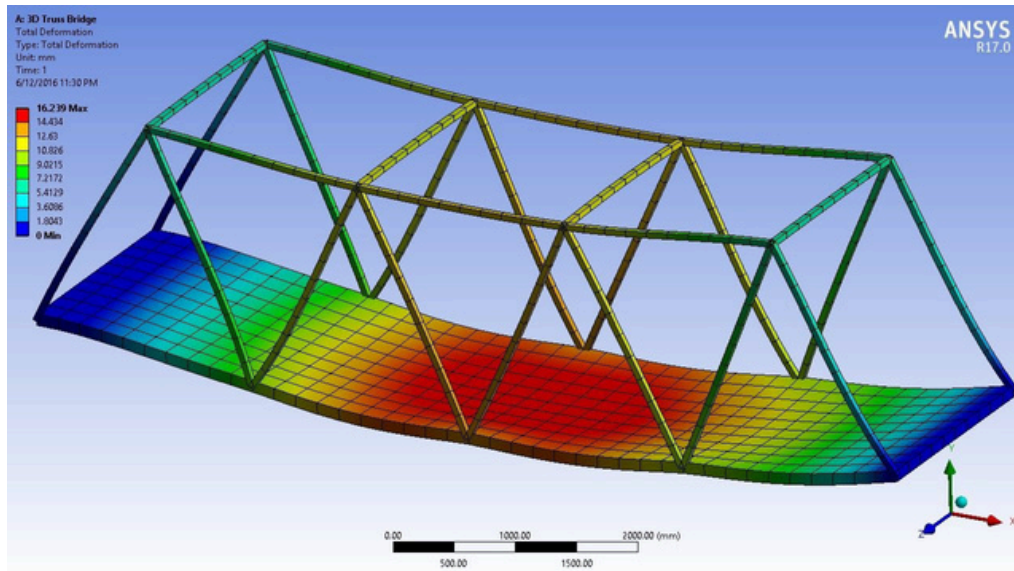


Construction Value | Undisclosed

Description | Impact echo testing carried out on wind turbine foundation.

Consulting Services | Structural Engineering  
Completion | 2019

## Transnet Cast Iron Bridge Fatigue Assessment



Construction Value	Undisclosed
Description	Finite element modelling of old cast iron bridges and fatigue assessment.
Consulting Services Completion	Structural Engineering 2018

## Ashton Arch Bridge Non-destructive Testing



Construction Value	Undisclosed
Description	Impact echo and ground penetrating radar testing carried out on bridge post-tensioned tie beam. Impact echo and ground penetrating radar testing
Consulting Services Completion	Structural Engineering 2019

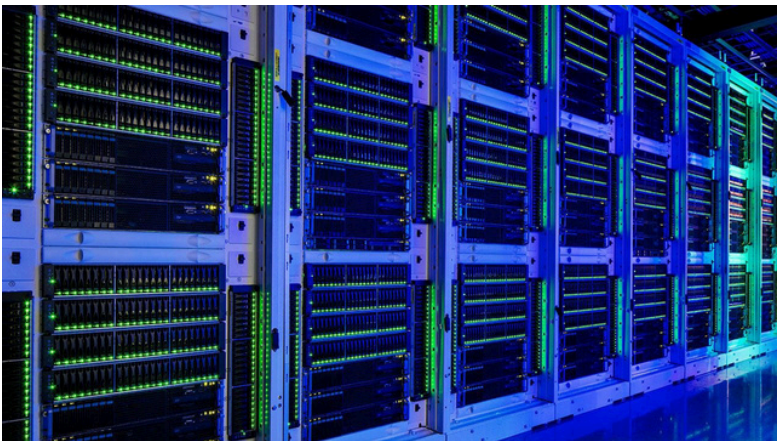
Electrical & Mechanical Engineering

New Ohangwena Education Directorate Offices in Eenhana



Construction Value	N\$ ±10 Million
Description	Design and supervision of MV reticulation, LV reticulation, telecommunications network and electronics works for office building.
Consulting Services Completion	Electrical Engineering 2024

MICT Gobabis



Construction Value	N\$ ±4 Million
Description	Design and supervision of LV reticulation, telecommunications network and electronics works for Ministry of Information and Communication Technology office building in Omaheke region.
Consulting Services Completion	Electrical Engineering 2016



## Standard Bank – Various branches in Namibia



Construction Value	N\$ ±14 Million
Description	Evaluation, re-design, design and supervision of electrical installations for Standard Bank branches across Namibia. The project included MV reticulation, LV reticulation and telecommunications networks.
Consulting Services Completion	Electrical Engineering Ongoing

## Ondangwa Cashbuild Trading Store, Oshana Region



Construction Value	N\$ ±16 Million
Description	Air conditioning and ventilation systems, water reticulation designs and installation supervision for Cashbuild store.
Consulting Services Completion	Mechanical Engineering 2018

Accommodation Barracks for Otavi Police Station,  
Otjozondjupa Region



Construction Value	N\$ ±11 Million
Description	Design and installation supervision of kitchen equipment, water reticulation and solar hot water system for the Ministry of Safety and Security.
Consulting Services Completion	Mechanical Engineering 2016





# Project List

Project Name	Description of Works	Construction Value	Project Status
Vocational Training Centre, Khorixas	N\$ ±80 Million Provision of structural steel and concrete design as well as construction supervision for new Vocational Training Centre in Khorixas, Kunene Region. Scope of works included RC foundation, column, slab and beam designs; steel portal frame and steel connection designs. Civil and structural engineering	N\$ ±80 Million	2020-2024
Grootfontein Fire Station	N\$ ±6 Million Provision of structural steel and concrete design as well as construction supervision for the Port 22548 Fire Station in Grootfontein, Namibia.. Scope of works included RC foundation, column, slab and beam designs; steel portal frame and steel connection designs. Civil and structural engineering Ongoing	N\$ ±6 Million	Ongoing
Kaptau Packaging Factory, Windhoek	N\$ ±10 Million Provision of structural steel and concrete design as well as construction supervision for the new Kaptau Packaging Factor in Windhoek, Namibia. Scope of works included RC foundation, column, slab and beam designs; steel portal frame and steel connection designs. Civil and structural engineering 2021-Ongoing	N\$ ±10 Million	2021 - 2023
Eluwa Special School, Oshana	N\$ ±15 Million Provision of structural steel and concrete design as well as construction supervision for the new Eluwa Special School in Oshana Region. Scope of works included RC foundation, column, slab and beam designs; steel portal frame and steel connection designs. Civil and structural engineering 2020-Ongoing	N\$ ±13 Million	2022
Groot Aub School	N\$ 20 Million Provision of structural steel and concrete design as well as construction supervision for additions for the primary school in Groot Aub, Khomas Region. Scope of works included RC foundation, column, slab and beam designs; steel portal frame and steel connection designs. Civil and structural engineering Ongoing	N\$ 20 Million	2022
Ondjanjo School	N\$ 14 Million Provision of structural steel and concrete design as well as construction supervision for the new Onjanjo School in Oshana Region. Scope of works included RC foundation, column, slab and beam designs; steel portal frame and steel connection designs. Civil and structural engineering 2020-Ongoing	N\$ 14 Million	2022

Grootfontein Modern Open Market	N\$ ±43 Million Provision of structural steel and concrete design as well as construction supervision for the Modern Open Market in Grootfontein, Namibia. Scope of works included RC foundation, column, slab and beam designs; steel portal frame and steel connection designs. Civil and structural engineering 2021-Ongoing	N\$ ±43 Million	2021-Ongoing
House Hangula	N\$ ±4 Million Design and construction supervision of private residence in Hochland Park, Windhoek. Scope of works included: structural concrete slabs, beams, columns, retaining wall as well as structural steel canopy and connection details. Civil and structural engineering 2019	N\$ ±4 Million	2019
Omuhonga Combined School	N\$ ±90 Million Provision of structural steel and concrete design as well as construction supervision for new combined school in Omuhonga. Scope of works included RC foundation, column, slab and beam designs; steel truss and steel connection designs. Civil and structural engineering Ongoing	N\$ ±90 Million	2023
Oranjemund Business Park	N\$ ±12 Million Provision of structural steel, concrete design and timber design for SME business park in Oranjemund. Scope of works included RC foundation and column designs, steel portal frame and steel connection designs. Civil and structural engineering Ongoing	N\$ ±12 Million	Ongoing
House Vilho	N\$ ±3 Million Design and construction supervision of private residence in Pioneers Park Extension 1, Windhoek. Scope of works included: structural concrete slabs, beams, columns, retaining wall as well as structural steel canopy and connection details. Civil and structural engineering 2017	N\$ ±3 Million	2017
New Ndamono PHC Clinic, Onankali	N\$ ±20 Million Bulk Earth works, access roads and parking, water and sewerage Planning, design, contract documentation, project management and construction supervision 2018	N\$ ±20 Million	2018
MR 74 Road Upgrade: Grootfontein-Rooidag Gate (74km)	N\$ ±190 Million Provision of consultancy services for the detailed design, tender documentation, contract administration and site supervision of the upgrading to low volume seal (LVS) standards for Section A: MR 74: Grootfontein-Rooidag gate (74km) for Roads Authority in the Otjozondjupa Region. Transport engineering 2021-Ongoing	N\$ ±190 Million	2021-Ongoing

DR3507 Road Upgrade: Bukalo-Muyako-Ngoma Road in Zambezi Region	N\$ ±250 Million Provision of consultancy services for the detailed design, tender documentation, contract administration and site supervision of the upgrading to low volume seal (LVS) standards for Roads Authority in the Zambezi Region. Transport engineering 2022-Ongoing	N\$ ±250 Million	2022-Ongoing
New Oluno Road for Ondangwa Town Council	N\$ ±12 million Pavement design, road alignment, layer works and construction supervision of new road for Ondangwa Town Council Transport planning and design consulting services	N\$ ±12 million	Ongoing
Upgrading Storm Water Channel at Bank of Namibia, Oshakati	N\$ ±2 Million Hydrology design, channel sizing and construction drawing provision of stormwater channel upgrading for Bank of Namibia. Planning, design, contract documentation, project management and construction supervision	N\$ ±2 Million	Ongoing
Construction of Services at Oranjemund Extension 10	N\$ ±14 Million Design and construction supervision of roads, sewer reticulation and water supply networks of Oranjemund Extension 10. Planning, design, contract documentation, project management and construction supervision 2018	N\$ ±14 Million	2018
Construction of Services for Witvlei, Omaheke Region	N\$ ±16 Million Sewerage Network and Waste Water Treatment Plant for Witvlei Planning, design, contract documentation, project management and construction supervision 2018	N\$ ±16 Million	2018
New Construction Sewerage Tre Plant in Oshakati	N\$ ±47 Million Construction of a new 1500m3 Sewerage treatment plant which consists of a platform, access gravel roads, bulk concrete & reinforcement works, Electrical & Mechanical installations Civil Structural & Mechanical engineering services Ongoing	N\$ ±47 Million	Ongoing
Rehoboth Design & Supervision Construction of Municipal Services Layout	N\$ ±16 Million Planning, Design and Construction Supervision of Bulk Municipal Services (Roads, Storm-water, water and Sewer Reticulation) Mechanical engineering consulting services (Phase 1 2024) Phase 2 Ongoing	N\$ ±16 Million	Ongoing
Henties Bay Planning, Design & Construction Supervision of Bulk Municipal Services	N\$ 22 Million (Roads, Stormwater, Water and Sewer Reticulation) for Extension 12 Henties Bay Ceval Structural engineering services 2023	N\$ 22 Million	2023



New Ohangwena Education Directorate Offices in Eenhana	N\$ ±10 Million Design and supervision of MV reticulation, LV reticulation, telecommunications network and electronics works for office building. Electrical engineering consulting services Ongoing	N\$ ±10 Million	2024
MICT Gobabis	N\$ ±4 Million Design and supervision of LV reticulation, telecommunications network and electronics works for Ministry of Information and Communication Technology office building in Omaheke region. Electrical engineering consulting services 2016	N\$ ±4 Million	2016
Standard Bank – Various branches in Namibia	N\$ ±14 Million Evaluation, re-design, design and supervision of electrical installations for Standard Bank branches across Namibia. The project included MV reticulation, LV reticulation and telecommunications networks. Electrical engineering consulting services Ongoing	N\$ ±14 Million	Ongoing
Ondangwa Cashbuild Trading Store, Oshana Region	N\$ ±16 Million Air conditioning and ventilation systems, water reticulation designs and installation supervision for Cashbuild store. Mechanical engineering consulting services 2018	N\$ ±16 Million	2018
Accommodation Barracks for Otavi Police Station, Otjozondjupa Region	N\$ ±11 Million Design and installation supervision of kitchen equipment, water reticulation and solar hot water system for the Ministry of Safety and Security. Mechanical engineering consulting services 2016	N\$ ±11 Million	2016
House Shiweda	N\$ ±9 Million Design and construction supervision of private residence in Auasblik Erf 887, Windhoek. Scope of works included: structural concrete slabs, beams, columns, retaining wall as well as structural steel canopy and connection details. Civil and structural engineering Client : PJ Shiweda Ongoing	N\$ ±9 Million	Ongoing
Sewer Reticulation , Sewerage Treatment Plant At Okahanja HRDC	N\$1.5 Million Detailed Design & Supervision	N\$1.5 Million	2024-Ongoing
Windhoek Machinery Fabrik Fire Protection Upgrades		TBD	2024-Ongoing

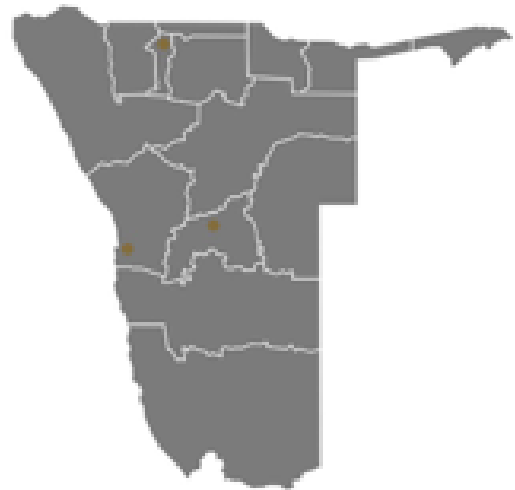
Otjiwarongo Extension 11 Roads & Services infrastructure		Undisclosed	2024-Ongoing
DR 3630 : ONYATI - ONYUULYE - ONKUMBULA (70KM)	N\$ ±250 Million Detailed Design , Tender Documentation , Contract Administration & Site Supervision Of The Construction of DR 3630 : ONYATI - ONYUULYE - ONKUMBULA (70KM) 2025 - Ongoing	N\$ ±250 Million	2025-Ongoing
1.MFMR Rundu Regional Office	1.Preliminary Investigation & Detailed Design 2.Prevention of soil Erosion & Supervision ( Construction Gabions ) 3.Construction of The MFMR Rundu Office	1. N\$ ±7 Million 2. N\$ ±4 Million 3. N\$ ±10 Million	2024-Ongoing
House Haludilu	N\$ ±6 Million Design and construction supervision of private residence in kleine Kuppe Erf 817, Windhoek. Scope of works included: structural concrete slabs, beams, columns, retaining wall as well as structural steel canopy and connection details. structural engineering Client : Mr & Mrs Haludilu Ongoing	N\$ ±6 Million	Ongoing
Transnet Cast Iron Bridge Fatigue Assessment	Undisclosed Finite element modelling of old cast iron bridges and fatigue assessment. Finite Element modelling	Undisclosed	2018
Ashton Arch Bridge Non- destructive Testing	Undisclosed Impact echo and ground penetrating radar testing carried out on bridge post-tensioned tie beam. Impact echo and ground penetrating radar testing 2019	Undisclosed	2019
Excelsior Wind Farm: Wind Turbine Foundation Non-destructive testing	Undisclosed Impact echo testing carried out on wind turbine foundation. Impact echo testing 2019	Undisclosed	2019

# Contact Details

Dream Engineering  
(Pty) Ltd P. O. Box  
23399, Windhoek Reg.  
No. 2016/0062

**Windhoek Office**  
106 Robert Mugabe street  
Windhoek, Namibia

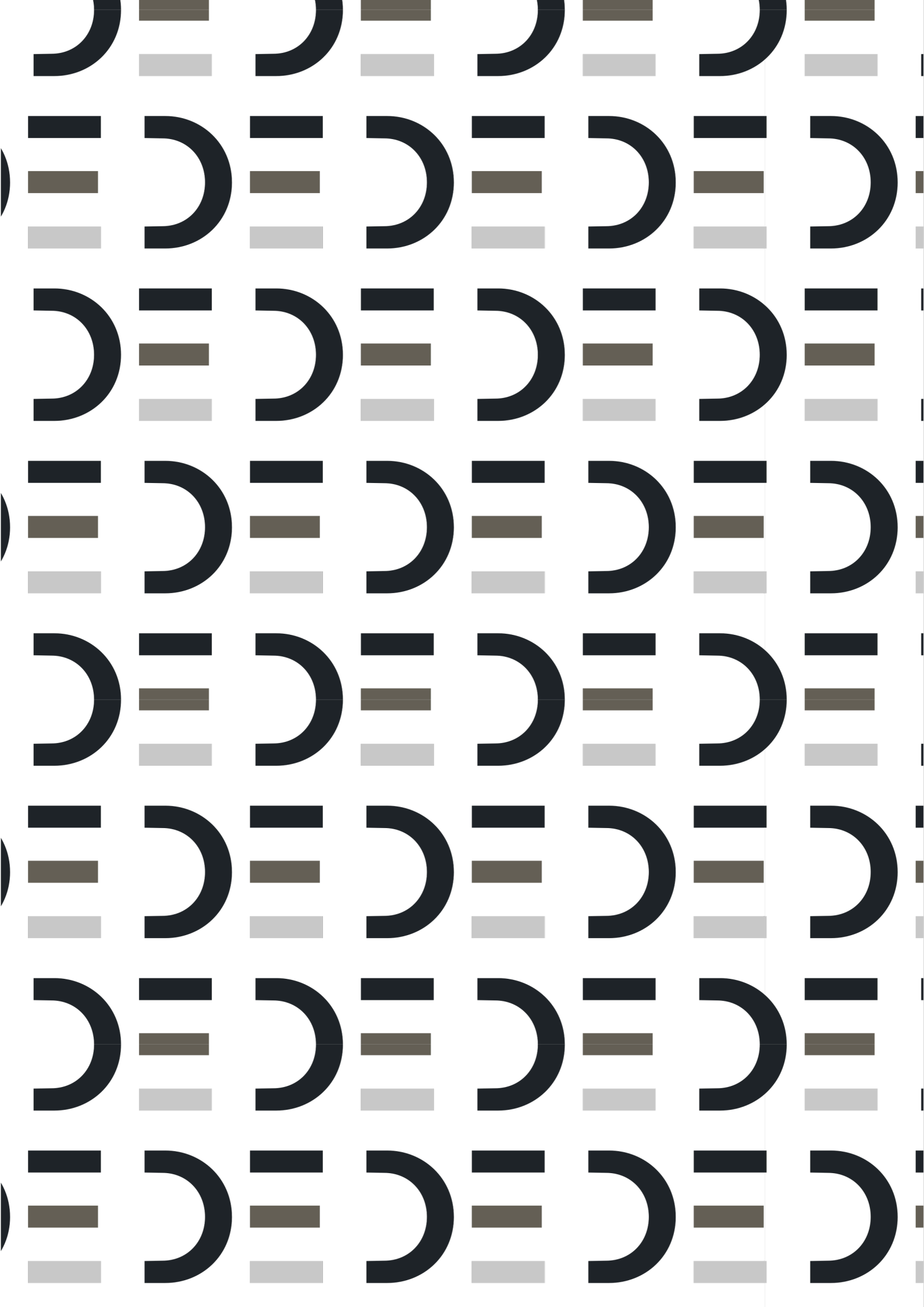
T: +264 61 251148  
F: +264 61 251158  
E : [info@dream-engineering.com](mailto:info@dream-engineering.com)  
W : [www.dream-engineering.com](http://www.dream-engineering.com)



## Accreditations & Affiliations









Visit us at  
[www.dream-engineering.com](http://www.dream-engineering.com)